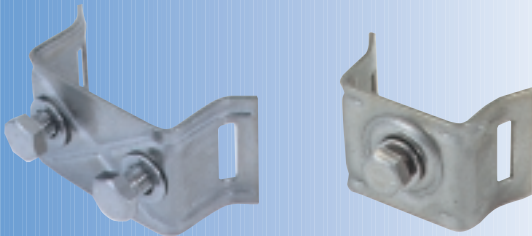


Bandimex Mounting Brackets with straight legs

SS-CrNi

50 pcs./box

Cat.No.		kg
H 001	1 bolt (M8 x 16) with washer	3,3
H 008	2 bolts (M8 x 16) with washers	4,4

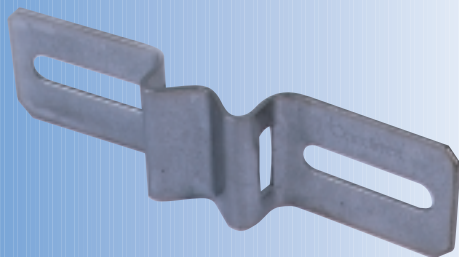


Bandimex Mounting Brackets with flared legs

SS-CrNi

50 pcs./box

Cat.No.		kg
H 021	1 bolt (M8 x 16) with washer	3,3
H 028	2 bolts (M8 x 16) with washers	4,4

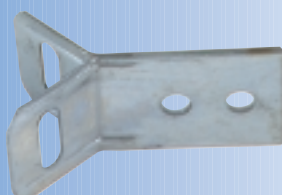


Bandimex Mounting Brackets with 9 mm wide slotted holes

SS-CrNi

50 pcs./box

Cat.No.		kg
H 026	90 mm long, 50 mm – 80 mm	2,6
H 025	140 mm long, 60 mm – 120 mm	4,0
H 027	200 mm long, 115 mm – 175 mm	6,3



Bandimex Y-Bracket

SS-CrNi

50 pcs./box

Cat.No.		kg
H 096	Y – Bracket 60 mm long	4,2
H 097	Y – Bracket 100 mm long	6,0